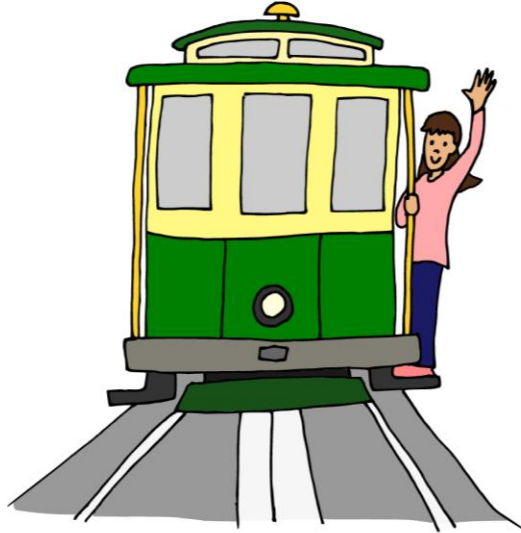


Antopia at Melbourne Museum



I am going to the Antopia Exhibit at Melbourne Museum!

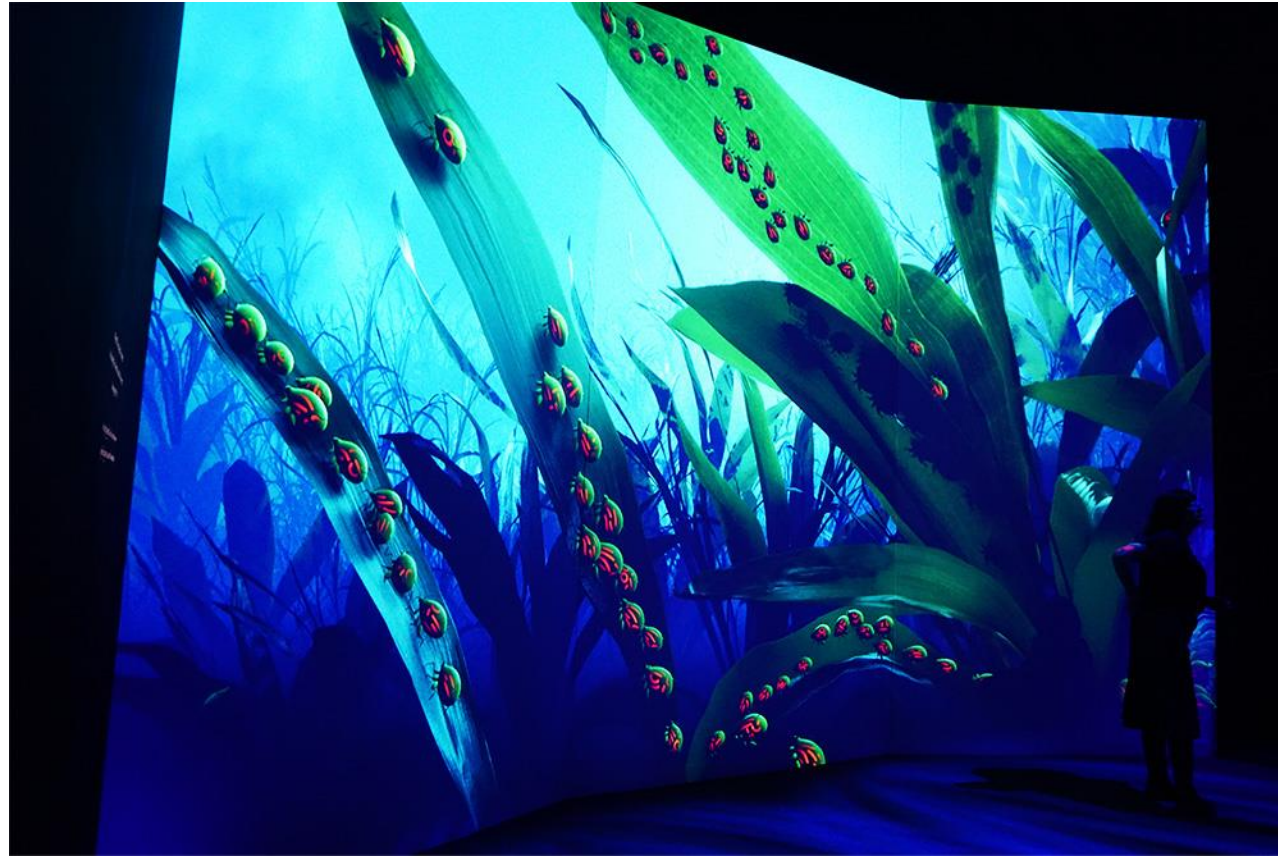


I might get there by going in the car, train or tram.

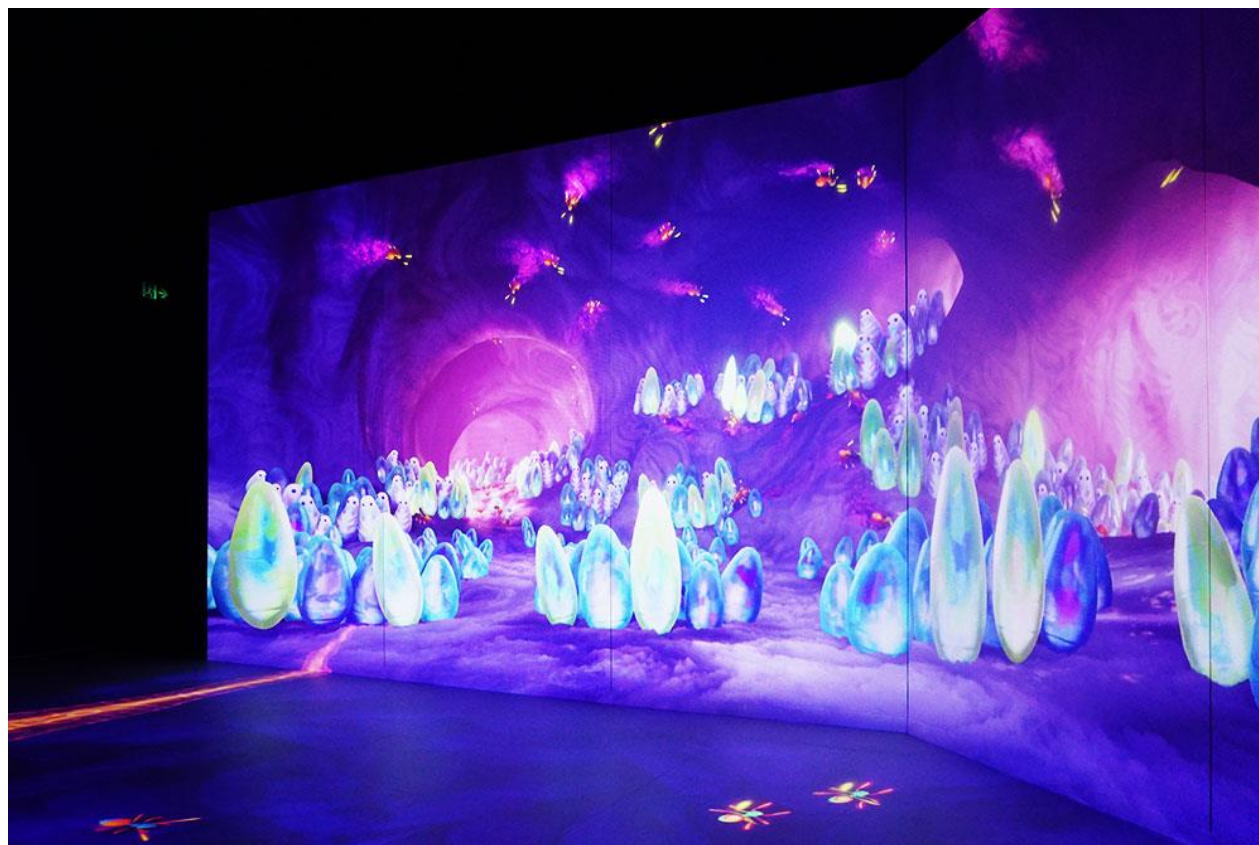
An adult will tell me how I am getting there.



"Antopia" is a special place at the Melbourne Museum where you can pretend to be an ant! I will learn about how ants live and work together.



The place is dark with large colourful screens.
These screens are really big – much taller than me!
I can imagine shrinking down really small and exploring the ant colony.



I can see amazing lights and colours on the big screens that show lots of ants doing different things, like being born.



The floor can be interactive!

I can use my feet to make colours and lights appear and move.

I can follow the ant trail and see where it leads me.



I can play games and help the ants find food.
I can run my fingers along plastic grates to hear the sort of sounds that ants make.



I can play with big puzzle pieces.

Sometimes, when I play with other kids, I might not get all the pieces I want.

Other people may also want to use the pieces I've already built.

That's okay, we can still have fun!



I can wait for my turn to play with these toys and activities.



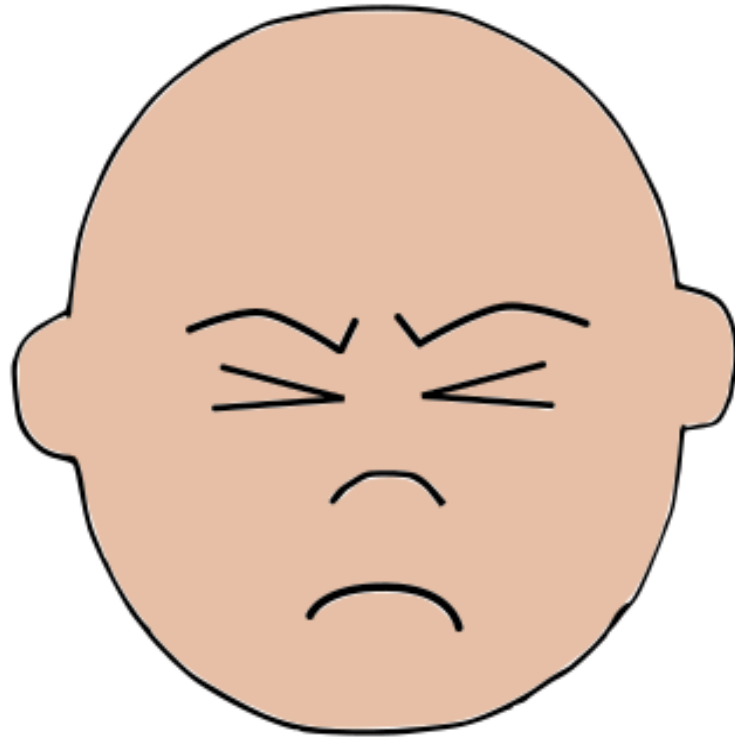
I might hear some new sounds, like the sounds ants make.



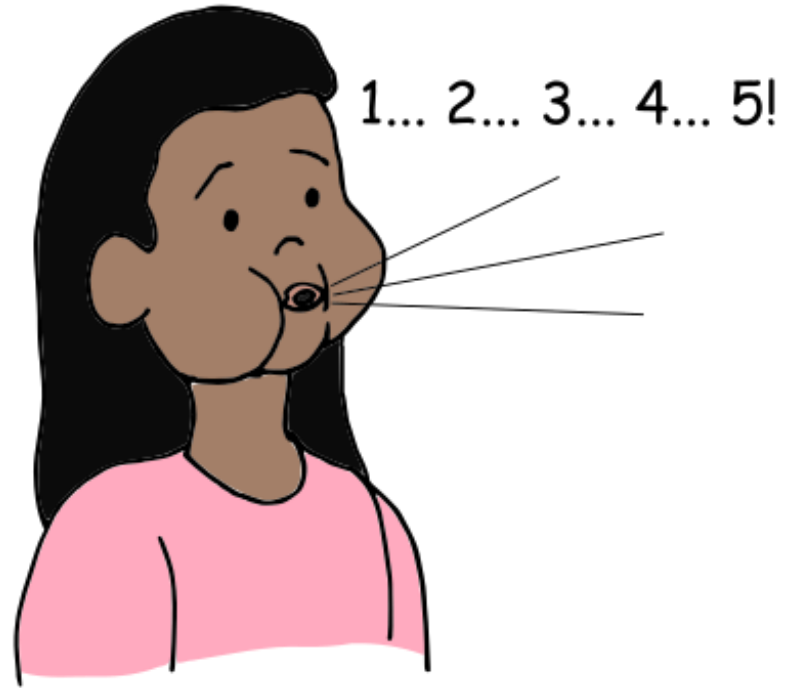
If the sounds are too much, I can try covering my ears lightly. I can also wear headphones.



I can play games and help the ants find food.
There is a lot of colour, light, sound and movement in this
space. The floor has a mirror on it!



If the lights are too much, I can try closing my eyes for a moment.



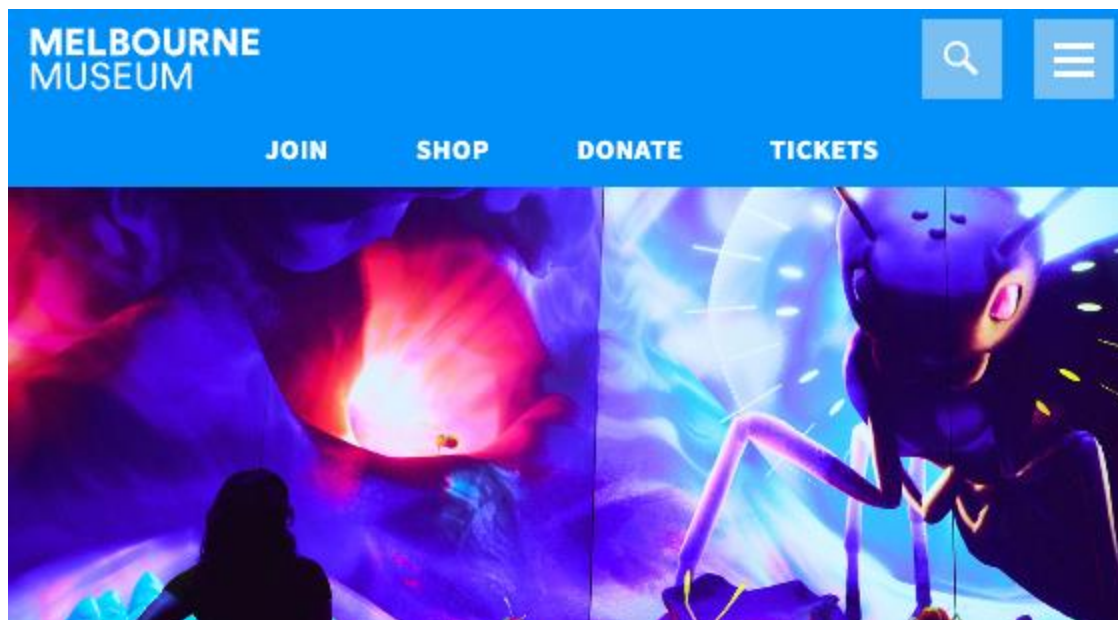
I can take slow, deep breaths to help me calm down.



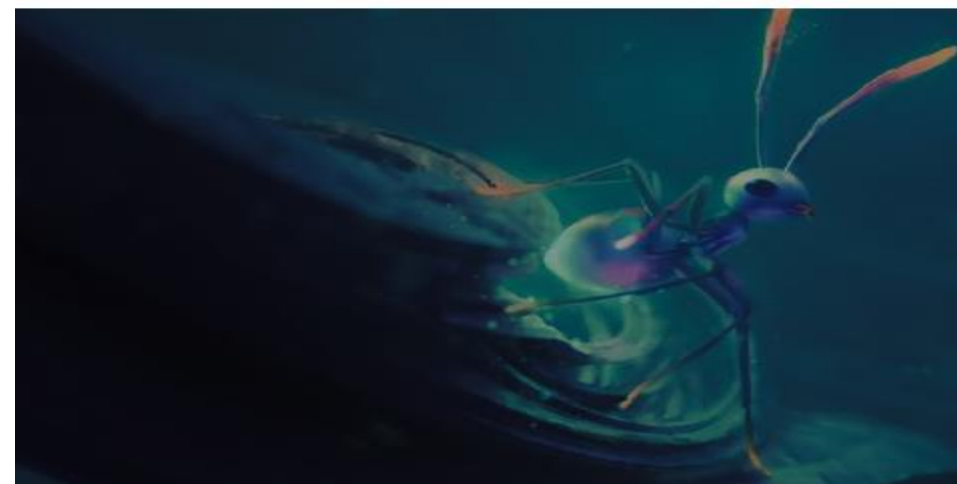
I can take a break if I need to. I can step away from the exhibit for a few minutes and find a quiet spot to rest.



I can hold hands with an adult or stay close to them to feel safe.

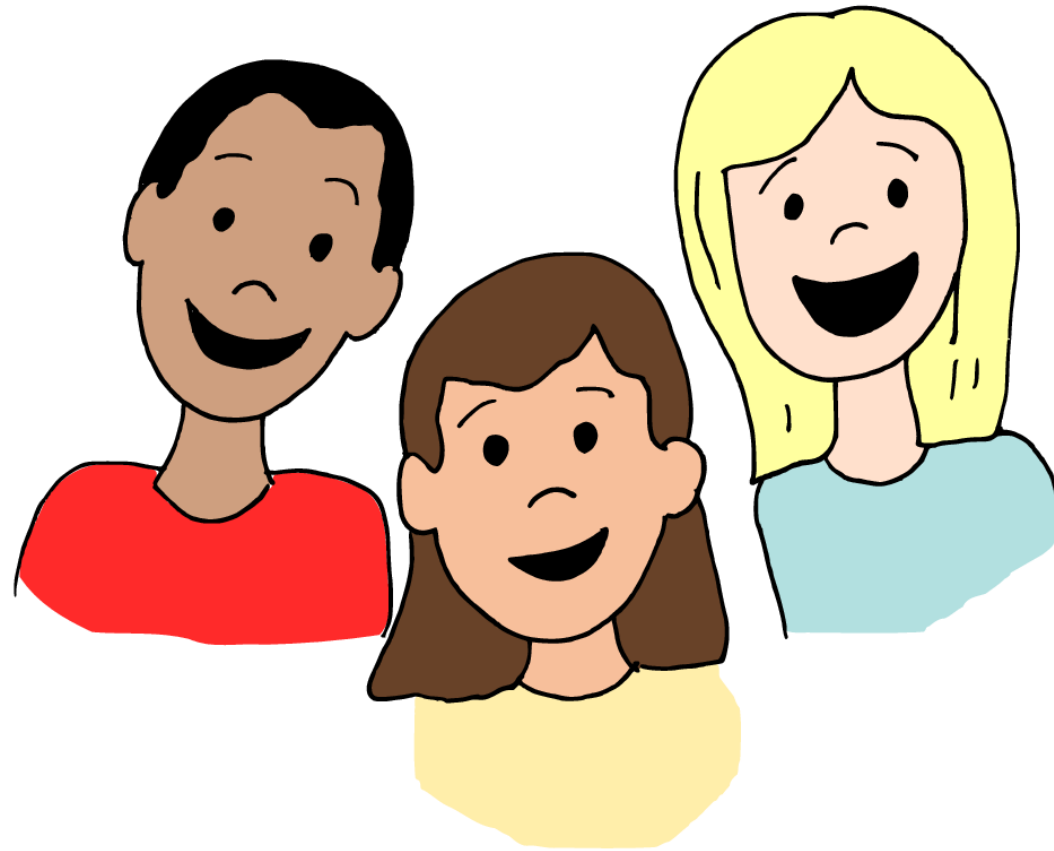


TOT! THINGS TO DO IN MELBOURNE WITH KIDS



If I have more questions, an adult can find some more information on the [Melbourne Museum Antopia page](#) or the [Tot Hot or Not Antopia review](#).

[Melbourne Museum also has general accessibility information.](#)



The Antopia Exhibit is a special and exciting activity and I might have fun trying something new!

Noah's Ark Inc provides the text to support the production of this social story in partnership with Tot Hot or Not.



Achieving Goals Together

Noah's Ark offers a range of services and programs that support families who have a child (aged 0-13) with additional needs.

If you would like to access more resources for families or information about Noah's Ark, visit noahsarkinc.org.au.